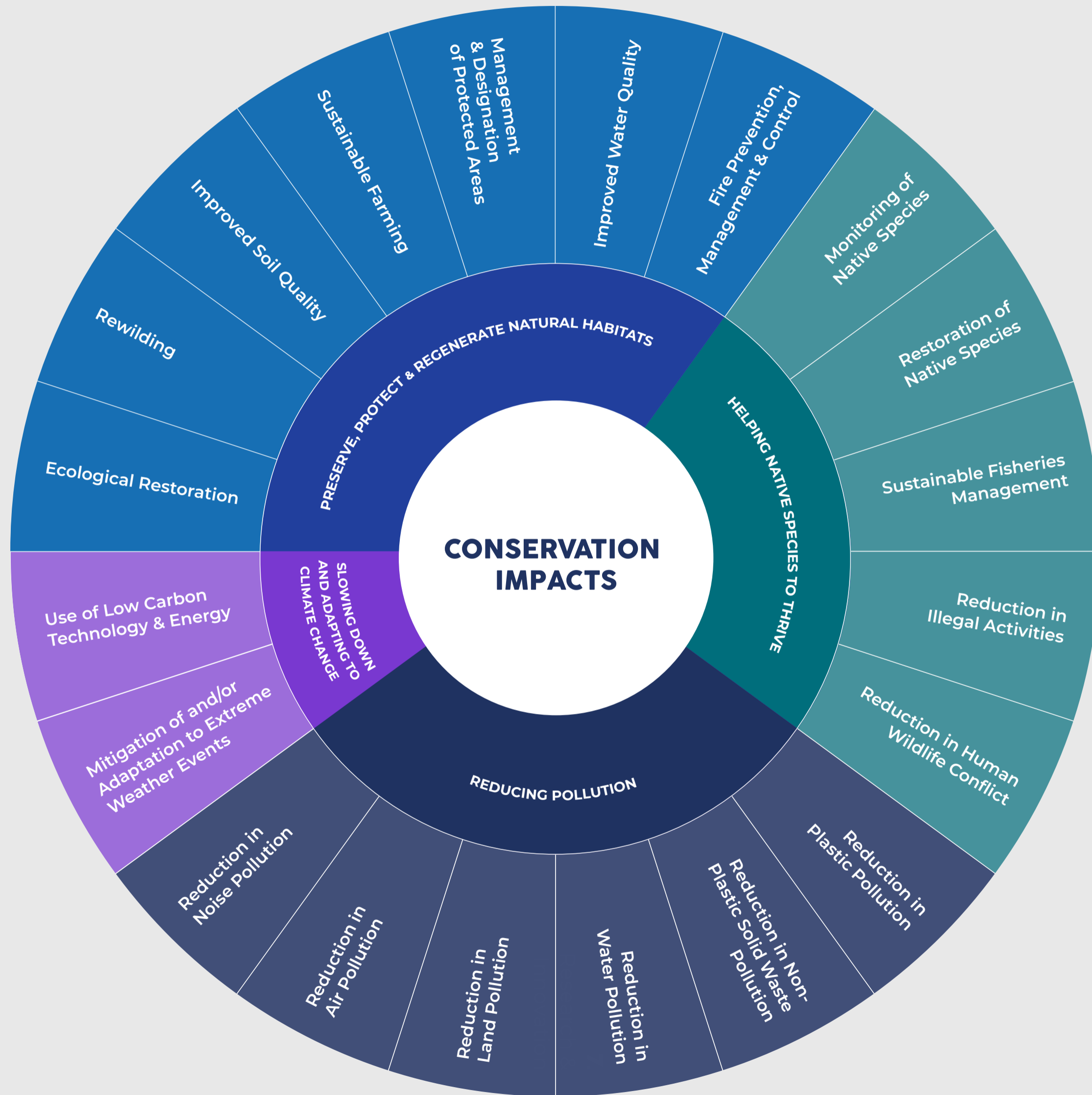


Environmental Outcomes



Indicators

Ecological Restoration

- Km2 of habitat restored
- Km2 of habitat mapped
- Number of native species actively restored
- % decline of invasive species
- Tonnes of CO2 sequestered
- Km2 of ecological corridors established

Monitoring of Native Species

- Number of populations monitored
- Number of species monitored
- Number of breeding sites monitored (nests, burrows, lodges, caves, etc.)
- % decline of invasive species

Reduction in Water Pollution

- % decrease in eutrophication levels
- % increase in water quality indicator species
- % increase in oxygenation levels
- M3 of water treated and decontaminated
- Km2 of oil spills reported and/or managed

Rewilding

- Km2 of area rewilded
- Number of species reintroduced
- Number of individuals reintroduced
- Number of obstacles reduced (e.g., fences, traps, pollution, dams)
- Km2 of ecological corridors established

Restoration of Native Species

- Number of viable native populations reintroduced/established
- Km2 recolonised by native species
- Number of individuals reintroduced
- Number of individuals rescued/rehabilitated

Reduction in Land Pollution

- % decrease in pollutants in the environment (e.g. toxic chemicals, heavy metal, organic pollutants)
- % increase in terrestrial quality indicator species
- Km2 of oil spills reported and/or managed

Improved Soil Quality

- % increase of organic carbon in the soil
- Number of earthworms per unit of soil
- % decrease in soil erosion rate
- Tonnes of CO2 sequestered

Sustainable Fisheries Management

- Number of species reported with increased populations
- Number of fisheries with improved management measures in place
- Number of individuals caught in bycatch rescued and released
- Number of co-management activities with involvement of local stakeholders
- Number of sustainable seafood initiatives launched publicly

Reduction in Air Pollution

- Tonnes of CO2 avoided
- % decrease in air pollutants (e.g., NOx, PM, etc)
- Tonnes of microparticles (≤ PM10) avoided

Sustainable Farming

- Km2 of increased farm area that is regeneratively managed
- Kgs of pesticides/fertilisers reduced through regenerative practices (organic farming, Nature-based solutions etc.)
- Kgs of nature-based solution soil amendments produced (compost, biochar etc.)
- Tonnes of seaweed farmed

Reduction in Illegal Activities

- Number of species protected against illegal activities
- Number of illegal actions reported to local authorities
- Number of illegal actions sanctioned by local authorities

Reduction in Noise Pollution

- Number of extreme noise events reported (e.g., underwater oil explorations, military exercises, etc.)

Management and Designation of Protected Areas

- Km2 surface area actively protected and managed as the consequence of the project
- Number of management measures adopted for protected areas
- Number of species or habitats under increased protection

Reduction in Human-Wildlife Conflict

- % decrease in Human-Wildlife Conflict reports
- % decrease of species mortality due to Human-Wildlife Conflict
- Number of management strategies in place preventing human-wildlife conflicts

Reduction in Plastic Pollution

- Kg of plastic waste removed from the environment
- Kg of plastic removed from the supply chain (e.g., by using plastic free/reusable packaging)
- Kg of plastic waste recycled
- Kg of plastic waste upcycled
- Kg of abandoned or discarded fishing gear removed from the environment
- m2 of microplastics collected and removed from the environment

Improved Water Quality

- % decrease in eutrophication levels
- % increase in water quality indicator species
- % increase in oxygenation levels

Reduction in Non-Plastic Solid Waste Pollution

- Kg of waste removed from the environment
- Kg of waste removed from the supply chain
- Kg of waste recycled
- Kg of waste upcycled

Fire Prevention, Management & Control

- Km2 of nature-based solutions in place to reduce fire risk
- Km2 of land with management practices in place to reduce fire risk
- Km2 of land mapped to show fire risk
- Km2 of habitat restored
- Number management practices in place (e.g. firebreak/firewall, regenerative grazing practice, fire proof plants)

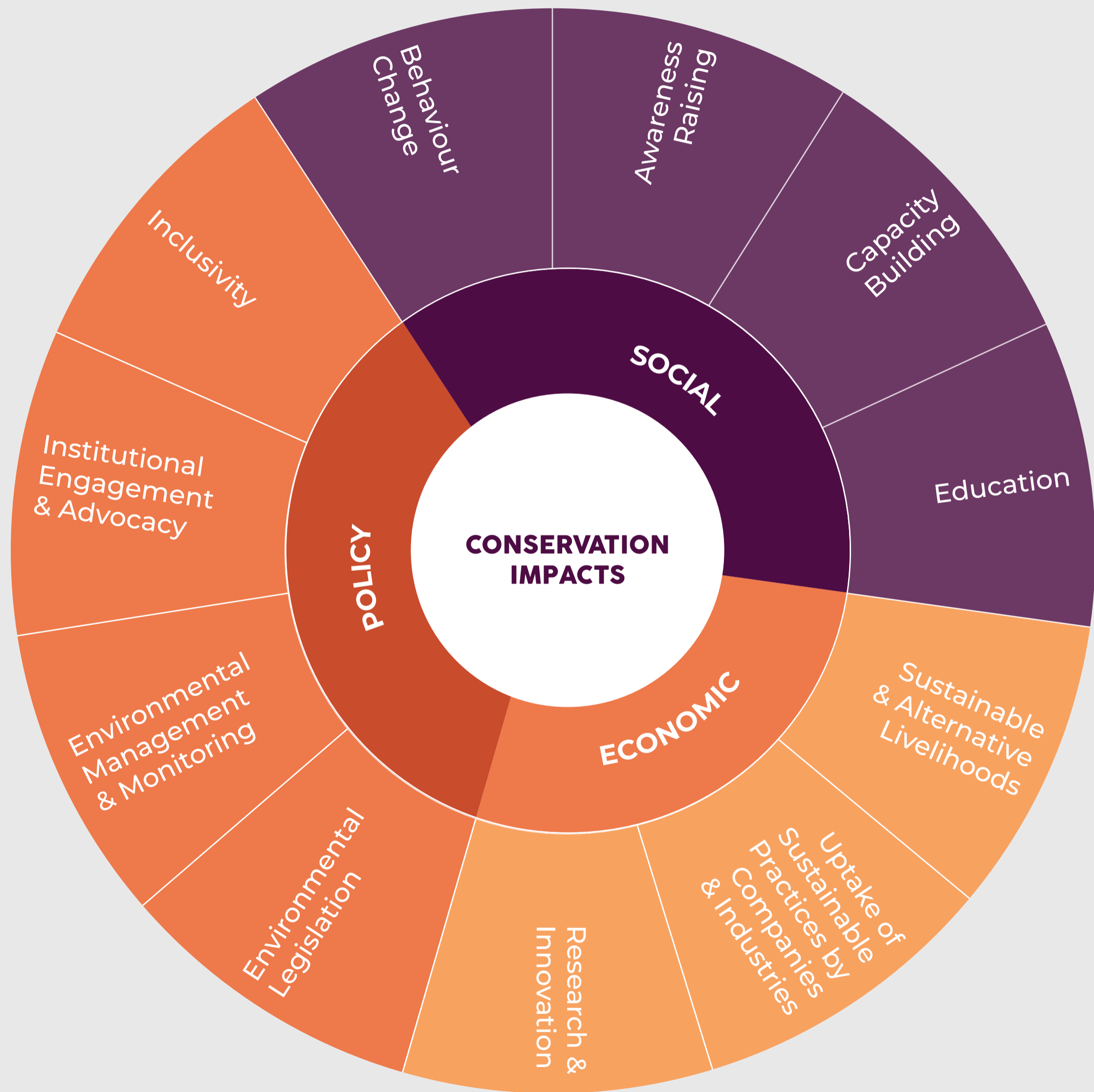
Use of Low Carbon Technology & Energy

- Kw/h/year of clean energy produced
- Number of independent clean energy communities established
- Tonnes of CO2 avoided
- Tonnes of CO2 sequestered

Mitigation of and/or Adaptation to Extreme Weather Events

- Km2 of nature-based solutions in place to reduce floodrisk
- Km2 nature-based solutions in place to mitigate the effect of heat waves

Social, Economic, Policy Outcomes



Indicators

- Behaviour Change**
 - Number of people changing their habits towards sustainable practices
 - Number of people enjoying/visiting nature
 - Number of new communities actively engaged
- Awareness Raising**
 - Number of campaigns (via social media, flyers, TV, radio, etc.)
 - Number of people reached through campaigns (via social media, flyers, TV, radio, etc.)
 - Number of awareness raising events organised
 - Number of people attending an awareness raising event
 - Number of people with improved knowledge
- Capacity Building**
 - Number of training workshops organised
 - Number of people trained
 - Number of new certifications/qualifications obtained
 - Number of new team members hired
- Education**
 - Number of children/students reached through educational campaigns
 - Number of schools/universities reached
 - Number of schools now including or adding new environmental topics/activities in their curriculum
- Sustainable & Alternative Livelihoods**
 - Number of green jobs created
 - Number of income-generating opportunities from sustainable practices
 - Number of farmers transitioning to sustainable/regenerative practices
- Uptake of Sustainable Practices by Companies and Industries**
 - Number of alternatives provided to unsustainable practices
 - % increase in revenue derived from responsible tourism
 - Number of local businesses transitioning to sustainable practices (e.g., tourism, plastic free, local produce)
 - Number of economically viable sustainable farms
 - % increase in revenue for sustainable farms derived from regenerative agriculture
- Research & Innovation**
 - Number of new technologies developed or piloted in local context
 - Number of peer-reviewed publications
 - Number of other research outputs (e.g., policy briefs, oral presentation)
- Environmental Legislation**
 - Number of laws approved/adhered to protect nature and mitigate against climate change
 - Number of public consultations on environmental issues by public authorities
 - Number of legal bans against harmful practices (e.g., use of ADD's, use of pesticides)
 - % increase in government environmental expenditure
- Environmental Management & Monitoring**
 - Number of management plans, strategies developed at local, regional or national levels
 - Number of policies and practices updated or informed with more recent or local knowledge
 - Number of traditional ecological knowledge and practices shared, acknowledged and integrated in environmental management
- Institutional Engagement & Advocacy**
 - Number of public authorities/entities involved
 - Number of activities (meetings, workshops etc.) involving local communities and public authorities
- Inclusivity**
 - Number of underrepresented groups included
 - Number of income-generating opportunities for people from underrepresented groups